

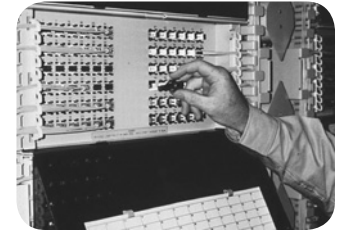


# 8-Inch FCM Optical Distribution Frame

## Introduction

### Frame

ADC's 8-inch FCM solution utilizes a traditional frame designed to fit a variety of termination, splice and storage applications. This rear load frame is built to ensure commonality with patch cord routing, slack storage and fiber protection. It is shipped complete with enhanced front cable management, top and bottom troughs. Available accessories include interbay management panels (IMPs), rear slack storage, etc.



### Termination Panel

The termination panel is available with multiple adapter types using angled retainers in configurations of 72, 96, 144 and higher and can be ordered with adapters only or preterminated with either intrafacility (IFC), outside plant (OSP) cables or pigtails for ease of installation.

### Splice Panel

ADC's splice panel protects splices of multiple splice types.

### Storage Panel

The 8-inch FCM storage panel stores patch cords discreetly or in bulk.

### Value-Added Module (VAM) Chassis

Adding signal management and enhancement functions, such as splitters, couplers and wavelength division multiplexers, optimizes the value of your fiber network, by providing nonintrusive access to the optical signal for monitoring and testing signal integrity. ADC's 8-inch FCM VAM chassis accommodates various splitter and WDM modules.

## Product Overview

<b>Recommended applications</b>	Small to medium fiber count applications. Best cable management solution in traditional ODF.
<b>Description</b>	Traditional footprint; 72-, 96- and 144-position panels
<b>Number of fibers, future growth potential</b>	Up to 5,000
<b>Interconnect</b>	Good
<b>Cross-connect</b>	Excellent
<b>Accommodates on-frame splicing</b>	Very good
<b>Accommodates off-frame splicing</b>	Very good
<b>Rear access</b>	Required. Has excellent rear cable management
<b>Density – terminations per frame</b>	1,152 terminations per frame
<b>Front access to rear connector</b>	Yes
<b>VAM capabilities</b>	Yes. Separate panel required
<b>Slack storage location</b>	IMP. Positive bend radius protection
<b>Connector access</b>	Angled retainer



# 8-Inch FCM Optical Distribution Frame

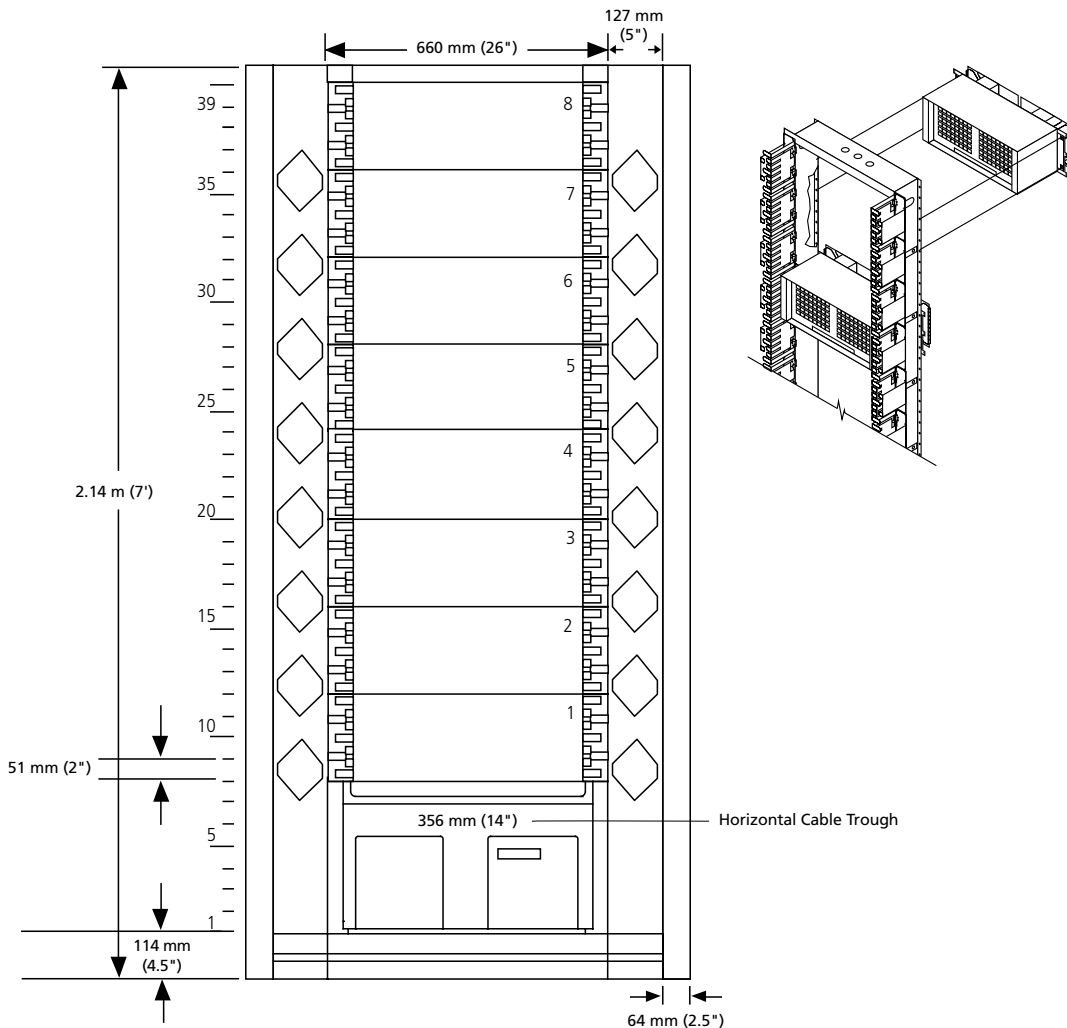
## Things to Consider When Ordering

### Configuration Form

This page **may be copied and used to configure** this rear load frame.\* The configuration drawing may **then be attached to an order.**

- Rear load frames are typically used in cross-connect applications in which splicing is done in the vault or a designated off-frame splice area
- Interbay management panels and end guards shown here are ordered and shipped separately
- Preterminated rear load panels are shipped separately from the frame
- 14-inch lower troughs are recommended for most applications; however, other lower troughs are available, see page 70

5 / 0 7 • 1 0 3 7 4 2 A E Optical Distribution Frames



\*Legacy front load panels and accessories remain available. Please contact ADC Technical Assistance Center for ordering information.

Traditional Frame Solutions