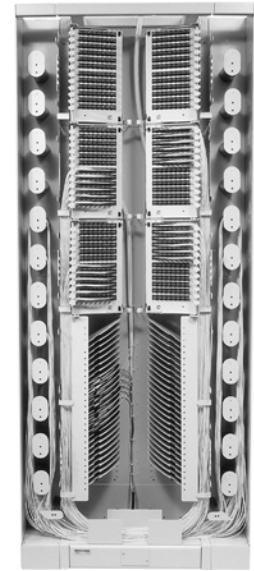




OMX600® Optical Distribution Frame

Introduction

ADC has developed the OMX600® optical distribution frame to meet today's network demands. Designed with total front access, the OMX600 has five right-hand and five left-hand mounting positions and can be installed back-to-back or against a wall to save valuable office floor space. This high-density frame terminates and splices up to 576 fibers in a 600 mm x 300 mm (23.6" x 11.8") footprint.



Termination Panel

The OMX600 termination panels are available with 72, 96 or 144 (with LC) adapters. These panels can be ordered with adapters only or preterminated with either intrafacility (IFC), outside plant (OSP) cables or pigtails for ease of installation. The panels are available with industry-standard connector/adaptor styles.

Splice Panel

The OMX600 splice panel provides protection and a mounting location for ADC's round splice trays. Each splice panel is two mounting positions tall and holds 24 splice trays. Each splice tray can house up to 24 splices.

Storage Panel

The storage panel enables storage of fiber-optic jumper slack within an OMX600 frame. Each jumper storage module is one module position tall. The interbay management panel provides off-frame storage of jumper slack. ADC recommends the use of 2.0 mm patch cords to maximize the cable management potential.

Value-Added Module (VAM) Chassis

Adding signal management and enhancement functions, such as splitters, couplers and wavelength division multiplexers, optimizes the value of your fiber network, by providing nonintrusive access to the optical signal for monitoring and testing signal integrity. The OMX600 VAM chassis accommodates various splitter and WDM modules.

Product Overview

Recommended applications	Medium to high fiber count applications. Limited floor space where versatility is a necessity
Description	Modular termination panels with splice and storage capability
Number of fibers, future growth potential	Termination panels 72, 96 and 144 (LC connectors only)
Interconnect	Excellent
Cross-connect	Good
Accommodates on-frame splicing	Excellent
Accommodates off-frame splicing	Yes (dedicated OMX splice frame also available)
Rear access	Not required
Density – terminations per frame	Up to 960 per frame
Front access to rear connector	Yes
VAM capabilities	Yes
Slack storage location	Within cabinet
Connector access	Excellent



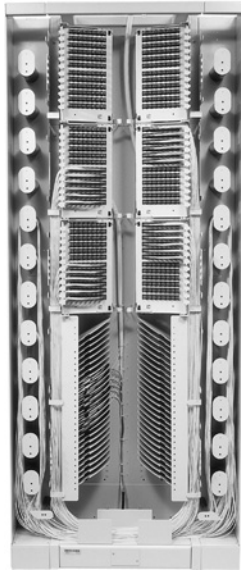
OMX600® Optical Distribution Frame

Introduction

Configurations

The modular OMX600® product line can be configured to optimize the network. All OMX600 configurations listed below are completely front-facing, enabling wall-mount or back-to-back configurations. The OMX600 can be enclosed with lockable front doors and end guards for increased fiber protection and security.

5 / 0 7 • 1 0 3 7 4 2 A E Optical Distribution Frames



Configuration 1

Configuration 1

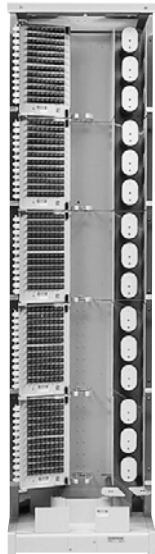
576 terminations and 576 splices (using the 96-position panel)
432 terminations and 432 splices (using the 72-position panel)
2.14 m x 900 mm x 300 mm (7' x 35.4" x 11.8")
Interconnect or cross-connect solution
Includes two off-frame jumper storage panels



Configuration 2

Configuration 2

288 terminations and 288 splices (using the 96-position panel)
216 terminations and 216 splices (using the 72-position panel)
2.14 m mm x 600 mm x 300 mm (7' x 23.6" x 11.8")
Interconnect solution
On-frame jumper storage



Configuration 3

Configuration 3

480 terminations (using the 96-position panel)
360 terminations (using the 72-position panel)
2.14 m x 600 mm x 300 mm (7' x 23.6" x 11.8")
Interconnect or cross-connect solution
On-frame jumper storage



Configuration 4

Configuration 4

576 terminations and 288 splices (using the 96-position panel)
432 terminations and 216 splices (using the 72-position panel)
2.14 m x 600 mm x 300 mm (7' x 23.6" x 11.8")
Cross-connect solution
On-frame jumper storage

Cabinet Solutions

Other configurations are available upon request. Please contact ADC Technical Assistance Center.