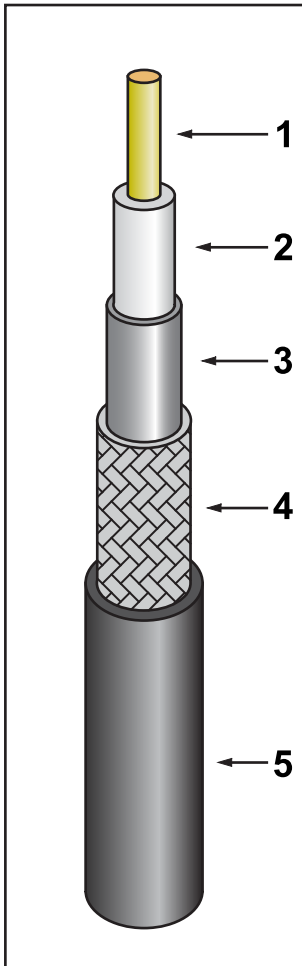


GBC400 Low Loss Coax Cable

LMR400® Direct Equivalent Cable

201-403



- Replacement for RG-8/9913 Air-Dielectric type Cable
- Jumper Assemblies in Wireless Communications Systems
- Short Antenna Feeder Runs
- Any application (e.g. WLL, GPS, LMR, WLAN, WISP, WiMax, SCADA, Mobile Antennas) requiring an easily routed low loss RF cable

Construction Specifications		
1 Inner Conductor	Bare Copper Clad Aluminium	2.74mm
2 Dielectric	Physical Foam Polyethylene	7.24mm
3 Outer Conductor	Bonded Aluminium Foil	7.39mm
4 Overall Braid	Tinned Copper	8.13mm
5 Jacket	Black Polyethylene	10.29mm

Electrical Specifications	
1 Impedance	50 Ω
2 Capacitance	77.1 pF/M (23.5pF/ft)
3 Velocity of Propagation	85%
4 Voltage Withstand	2500 VDC
5 Max Operating Frequency	11.0 GHz

Environmental Specifications	
1 Bending Radius Static	25mm (1.0")
2 Bending Radius Repeated	103mm (4.0")
3 Weight	100Kg/Km



LSZH
Version
Also
Available

Frequency (MHz)	150	220	450	900	1500	1800	2000	2500	3000	5800
Attenuation dB/100m	5.0	6.1	8.9	12.8	16.8	18.6	19.6	22.2	24.8	35.5
Avg. Power kW	1.47	1.20	0.83	0.58	0.44	0.40	0.37	0.33	0.28	0.21

Connectors*				
				
N Type Crimp Plug	TNC Crimp Plug	SMA Crimp Plug	N Type Clamp Plug	N Type Clamp Socket

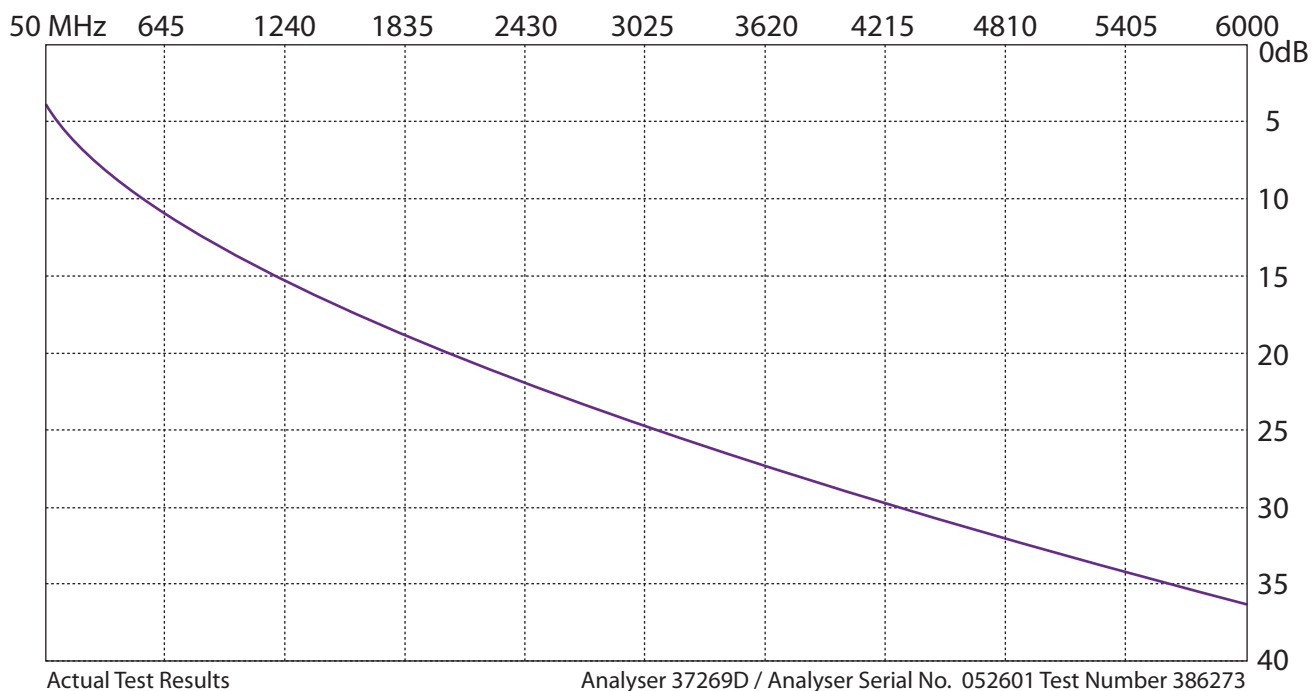
*Only A Selection of Connectors Shown, More Available From Stock

**We Manufacture Your
Cable Assemblies
To Your Spec**



Although GEM Cable Solutions makes every reasonable effort to ensure their accuracy at the time of this publication, information and specifications described herein are subject to error or omission and to change without notice, and the listing of such information and specifications does not ensure product availability.

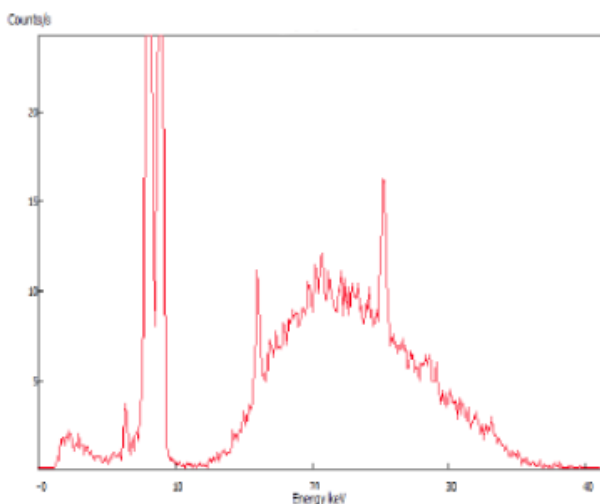
Insertion Loss, GBC400 100 Metre, NM - NM Assembly



RoHS

RoHS Screening conducted on cable sample using UKAS-accredited test method BS EN 62321-1 in compliance with European RoHS Directive 2011/65/EU. The results obtained were compared with the required specifications and found to be compliant.

Spectrum



Element	PPM %	+/-			
Br	38.8	1.5	Pass	Analysers Mode	RoHS/WEEE
Cd	ND < 68		Pass	Analysers Serial #	561582
Pb	ND < 8		Pass		
Hg	ND < 12		Pass		
Cr	ND < 110		Pass		

