

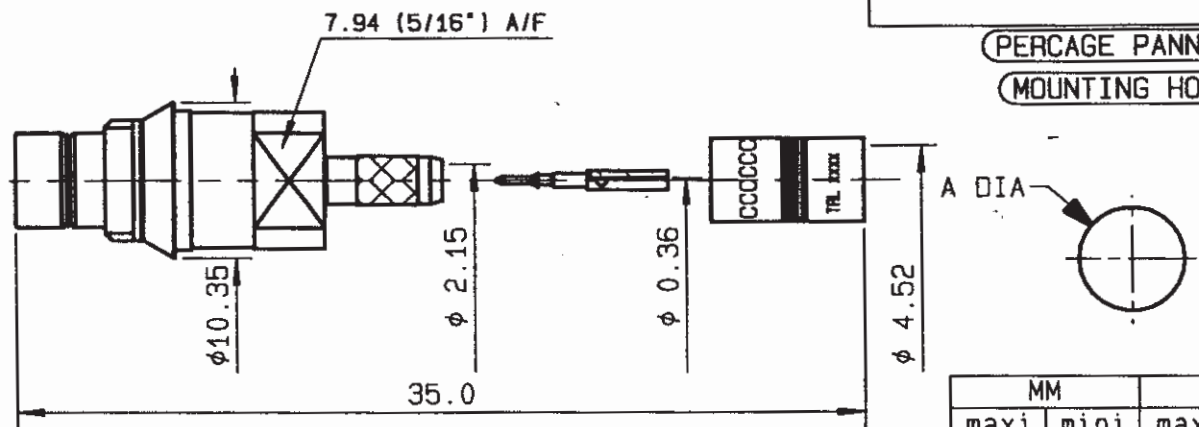
Q96117Z

	- TECHNICAL DATA	R214.313.722	
STRAIGHT CONNECTOR C-C MALE CRIMP TYPE CABLE 3.6/75 DOUBLE SCREEN PACK 20		Issue : 9618	Page
		Series : TYPE 43	1 / 2

PLUG 43/5GTIS

PERCAGE PANNEAU

MOUNTING HOLE



	MM		INCH	
	maxi	mini	maxi	mini
A	9.35	9.15	0.368	0.36

CABLES : BT3002

CHARACTERISTICS

NOMINAL IMPEDANCE	75 Ω
FREQUENCY RANGE	0-3 GHz
TEMPERATURE RATING	-40/+100 °C
VSWR	NA + 0 x F(GHz)Max1
RF INSERTION LOSS	NA \sqrt{F} (GHz) dB Max1
VOLTAGE RATING	500 Vrms Max
DIELECTRIC WITHSTANDING VOLTAGE	1500 Vrms min
INSULATION RESISTANCE	5000 M Ω min
HERMETIC SEAL	NA Atm.cm3/s
LEAKAGE (pressurized only)	NA Mpa
WEIGHT	10 gr

APPLICABLE STANDARDS	-
CABLE RETENTION	150 N min
CENTER CONTACT RETENTION	
Axial force - mating end	22 N min
Axial force - opposite end	NA N min
Torque (Min)	NA cm.N min
RECOMMENDED TORQUES	
Mating	NA cm.N
Panel nut	NA cm.N
Clamp nut	NA cm.N

CONSTRUCTION

CONNECTOR PARTS	MATERIALS	FINISH
BODY	BRASS	GOLD
OUTER CONTACT	-	-
CENTER CONTACT	BRASS	GOLD
INSULATOR	PTFE	-
FERRULE	BRASS	NICKEL
GROMMET	POLYACETAL	-
-	-	-
-	-	-
-	-	-

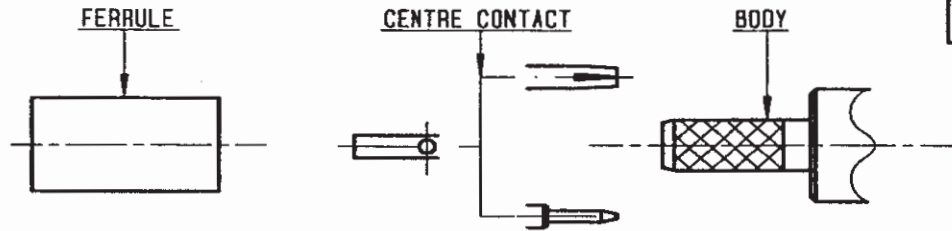


R214.313.722

Issue : 9618

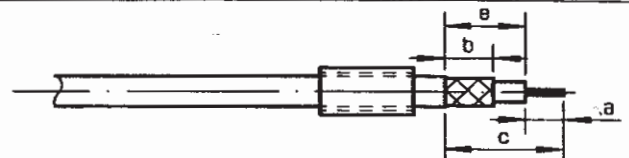
Page

2 / 2



①

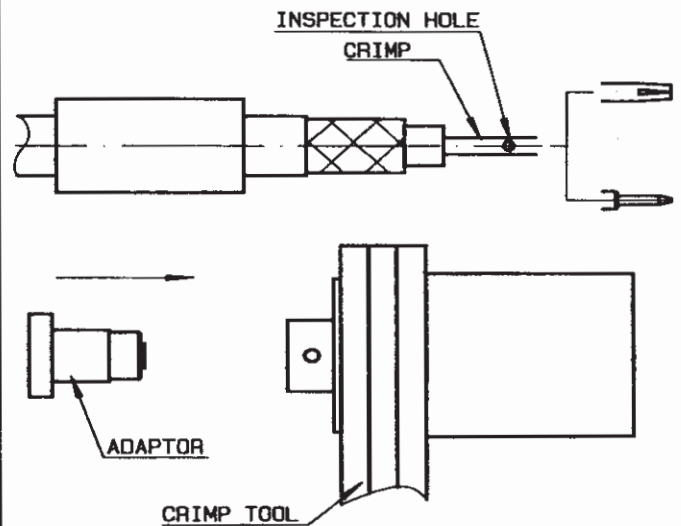
Slide ferrule onto cable.
Strip cable.



Stripping	a	b	c	d	e
inch	0.177	0.315	0.827	0	0.65
mm	4.5	8	21	-	16.5

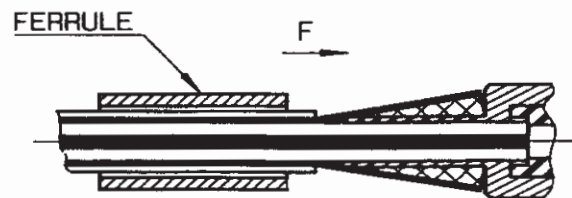
②

Place centre contact on conductor.
(ensure conductor is visible through inspection hole).
Place adaptor in crimp tool.
Insert cable into adaptor. Push home.
Crimp centre contact.
Crimp tool R282 281 010 (Q92434)



③

Guide dielectric into connector while fanning braid. Push home until centre contact "clicks" into place.



④

Slide crimp sleeve forward until sleeve butts up against body.
Crimp ferrule.
Crimp tool R282 287 000 (Q92316) + die set R282 265 002 (Q92435) (Hex. 4.52).

