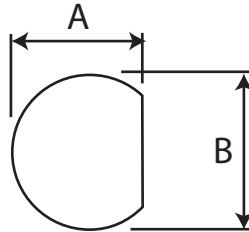


BNC Panel Solder Socket For Brass Body, White ABS Insulated Rear (Insulated) (50 Ohm)

Part number: 305-509



Cut-out Dimensions A=8.90mm, B=9.65mm

Description	BNC Insulated Panel Jack, Solder Receptacle
Fixing Method	Panel
Body	Brass / ABS
Contact	Brass, Gold Plated
Dielectric	Delrin
Insulator	ABS
Locknut	Brass, Nickel Plated
Washer	Steel, Nickel Plated
Durability	500 mating cycles
Impedance	50 ohms
Max. Frequency	4 GHz
Temperature Range	-55 to +85 degrees C
Working Voltage	500 Volts RMS Maximum

