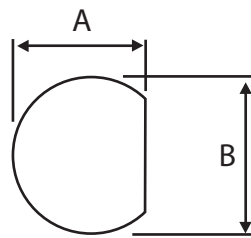


N Type Crimp Bulkhead Socket To Fit RG142. RG223. RG400

Part number: 308-109

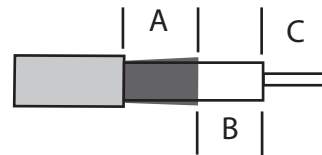
Cut-out Dimensions

A=13.70mm, B=16.10mm



Strip Dimensions

A=9mm, B=2mm, C=4mm



Description	N Type Crimp Bulkhead Socket, Nickel Plated
To Fit Cable Types	RG142, RG223, RG400
Fixing Method	Crimp
Body	Brass, Nickel Plated
Contact	Brass, Gold Plated
Dielectric	PTFE
Ferrule	Brass, Nickel Plated
Locknut	Brass, Nickel Plated
Washer	Brass, Nickel Plated
Cable Retention	Equal to breaking strain of cable
Dielectric Withstanding	2500 Volts RMS Maximum
Durability	500 mating cycles
Impedance	50 ohms
Max. Frequency	6 GHz
Temperature Range	-65 to +165 degrees C
Working Voltage	1500 Volts RMS Maximum
Maximum Panel Thickness	2.00 mm

