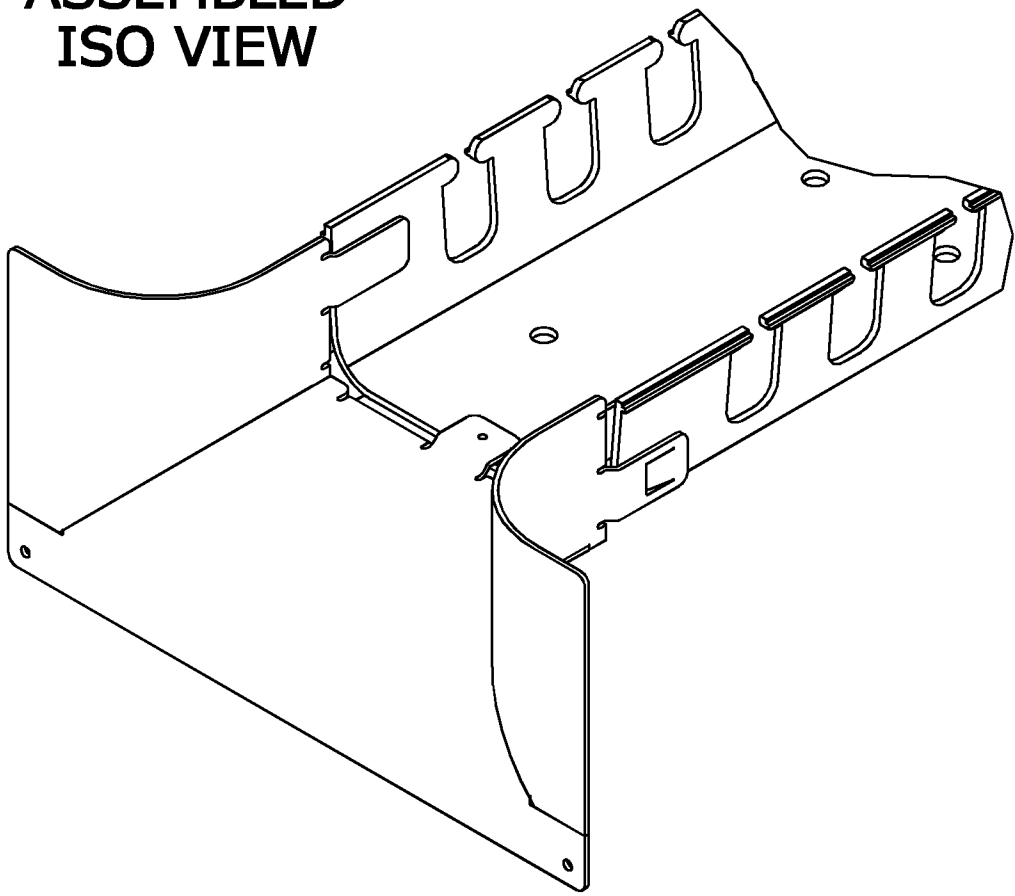
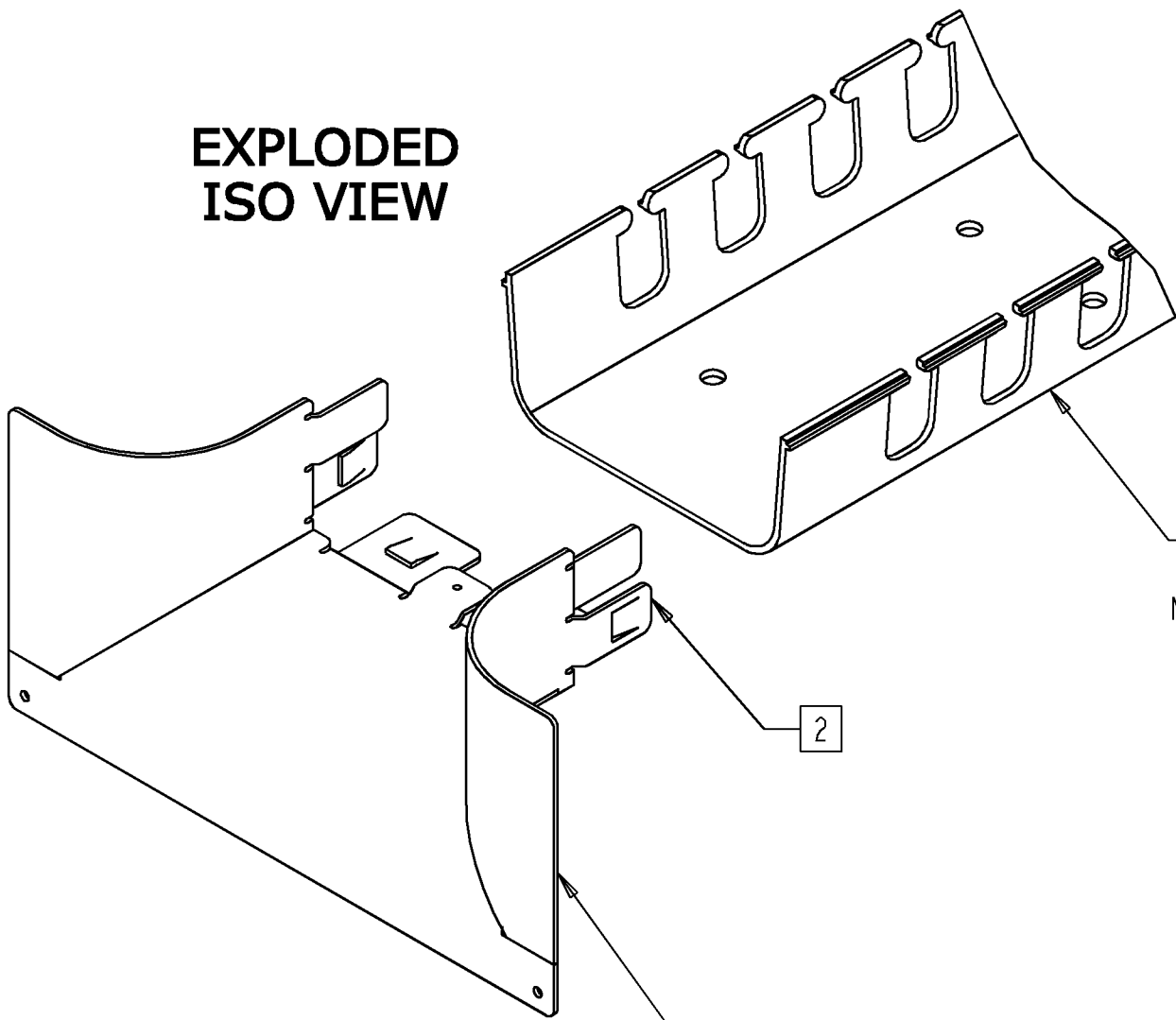


REV	MCO	DWN	DATE
A	20164390	GNM	01-JUN-05
B	20175855	GNM	26-AUG-05

ASSEMBLED
ISO VIEW

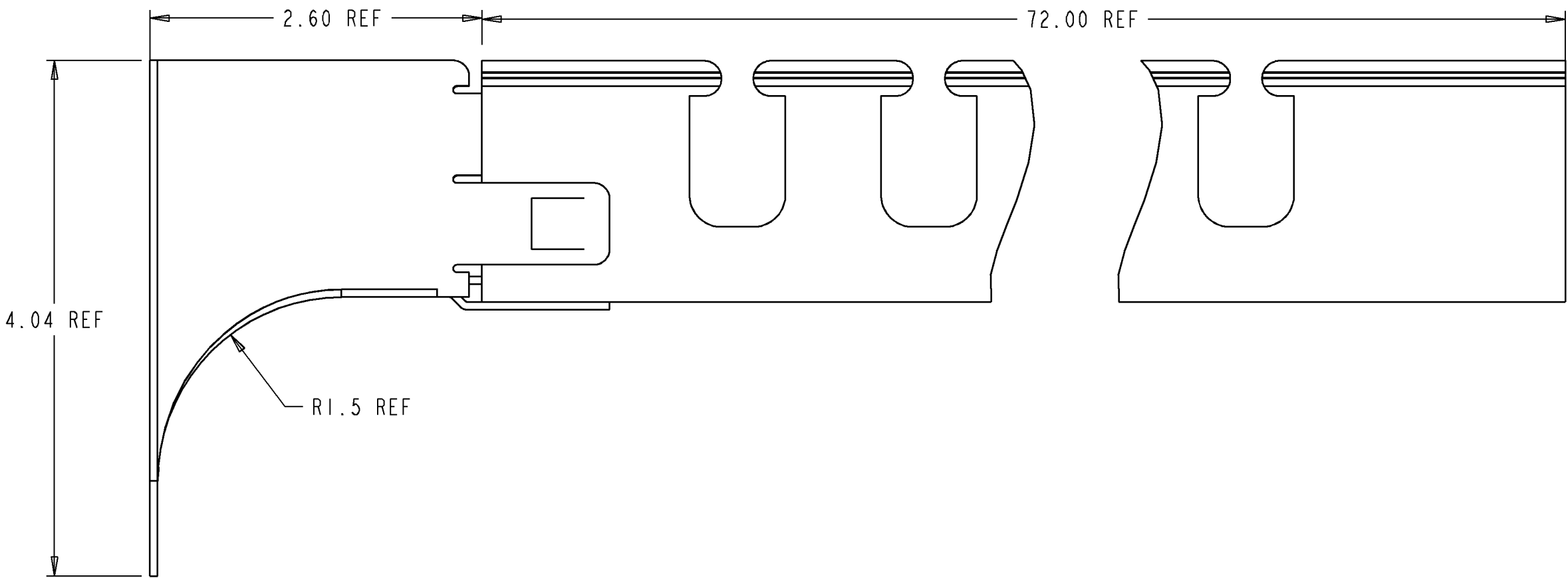


EXPLODED
ISO VIEW



ADC 2X4" VERTICAL
SLOTTED DUCT
NOT INCLUDED WITH KIT
CAT # FGS-KTW2-E

TRUMPET FLARE

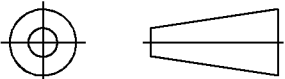


- NOTES:**
- 1. KIT INCLUDES THE FOLLOWING:
 - (1) TRUMPET FLARE 2X4".
 - (1) COPY OF THIS DRAWING.
 - ATTACHING THE TRUMPET FLARE TO THE VERTICAL SLOTTED DUCT:
 - 2. MATE THE TRUMPET FLARE TO THE VERTICAL SLOTTED DUCT AS SHOWN. SIDES OF THE TRUMPET FLARE WILL NEED TO BE SQUEEZED INWARD SLIGHTLY

CAT #: FGS-MTRM-E



INFORMATION ON THIS DOCUMENT IS PROPRIETARY TO ADC AND SHALL NOT BE USED, COPIED, REPRODUCED, OR DISCLOSED IN WHOLE OR IN PART WITHOUT WRITTEN CONSENT OF ADC.				TITLE TRUMPET FLARE FOR VERTICAL SLOTTED FGS 2X4 INST. DRAWING	
ALL DIMS AND TOLERANCES .XX:±N/A ARE INCHES UNLESS .XXX:±N/A OTHERWISE SPECIFIED ANGULAR:±N/A		C SIZE	DRAWING NUMBER 1327840	B REV	
DO NOT SCALE DRAWING		ENGR: C. ARROYO DWN: J. GABRIEL NERI		SHT. 1 OF 1	



**DIMENSIONS IN INCHES
THIRD ANGLE PROJECTION**