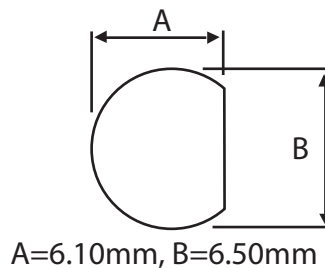


SMA bulkhead Crimp socket For RG142 RG223 RG400 (11mm Hex. Flange)

Part number: 311-205



| Description | SMA Crimp Bulkhead Jack, Gold Plated |
|-------------------------|--------------------------------------|
| To Fit Cable Types | RG142 RG223 RG400 |
| Fixing Method | Crimp |
| Body | Brass, Gold Plated |
| Contact | Beryllium Copper, Gold Plated |
| Dielectric | PTFE |
| Ferrule | Brass, Gold Plated |
| Locknut | Brass, Gold Plated |
| O Ring | Rubber |
| Washer | Brass, Gold Plated |
| Cable Retention | Equal to breaking strain of cable |
| Dielectric Withstanding | 1000 Volts RMS Maximum |
| Durability | 500 mating cycles |
| Impedance | 50 ohms |
| Max. Frequency | 12.4 GHz |
| Temperature Range | -65 to +165 degrees C |
| Working Voltage | 500 Volts RMS Maximum |
| Maximum Panel Thickness | 2.50 mm |

