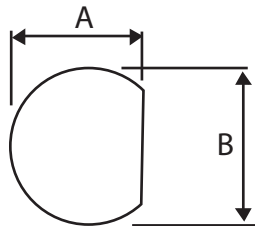


# SMA bulkhead crimp socket for RG178,RG196

Part number:311-213

A=6.10mm, B=6.50mm



| Description             | SMA Crimp Bulkhead Jack, Gold Plated |
|-------------------------|--------------------------------------|
| To Fit Cable Types      | RG178                                |
| Fixing Method           | Crimp                                |
| Body                    | Brass, Gold Plated                   |
| Contact                 | Beryllium Copper, Gold Plated        |
| Dielectric              | PTFE                                 |
| Ferrule                 | Brass, Gold Plated                   |
| Locknut                 | Brass, Gold Plated                   |
| O Ring                  | Rubber                               |
| Washer                  | Brass, Gold Plated                   |
| Cable Retention         | Equal to breaking strain of cable    |
| Dielectric Withstanding | 750 Volts RMS Maximum                |
| Durability              | 500 mating cycles                    |
| Impedance               | 50 ohms                              |
| Max. Frequency          | 12.4 GHz                             |
| Temperature Range       | -65 to +165 degrees C                |
| Working Voltage         | 335 Volts RMS Maximum                |
| Maximum Panel Thickness | 3.20 mm                              |

