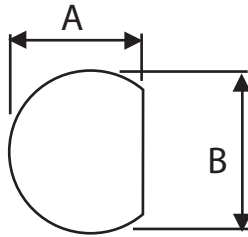


SMA Reverse Polarity Bulkhead Crimp Socket For RD316, RG316DS

Part number:311-601



Cut-out Dimensions A=6.10mm, B=6.50mm

Description	SMA Reverse Polarity Crimp Bulkhead socket, Gold Plated
To Fit Cable Types	RD316 RG316DS
Fixing Method	Crimp
Body	Brass, Gold Plated
Dielectric	PTFE
Ferrule	Brass, Gold Plated
Locknut	Brass, Gold Plated
Pin	Brass, Gold Plated
Washer	SS41 - Gold Plated
Cable Retention	Equal to breaking strain of cable
Dielectric Withstanding	750 Volts RMS Maximum
Durability	500 mating cycles
Impedance	50 ohms
Max. Frequency	12.4 GHz
Temperature Range	-65 to +165 degrees C
Working Voltage	335 Volts RMS Maximum

