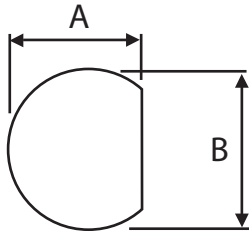


SMB Crimp Bulkhead Socket to Fit LMR100. RG174. RG188. RG316

Part number: 312-103

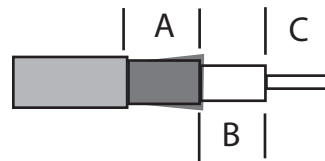
Cut-out Dimensions

A=4.50mm, B=5.00mm



Strip Dimensions

A=5mm, B=3.5mm, C=2.5mm



Description	SMB Crimp Bulkhead Socket, Gold Plated
To Fit Cable Types	LMR100. RG174. RG188. RG316
Fixing Method	Crimp
Body	Brass, Gold Plated
Dielectric	PTFE
Ferrule	Brass, Gold Plated
Locknut	Brass, Gold Plated
Pin	Phosphor Bronze, Gold Plated
Washer	Brass, Gold Plated
Cable Retention	Equal to breaking strain of cable
Dielectric Withstanding	750 Volts RMS Maximum
Durability	500 mating cycles
Impedance	50 ohms
Max. Frequency	4 GHz
Temperature Range	-65 to +165 degrees C
Working Voltage	335 Volts RMS Maximum

