

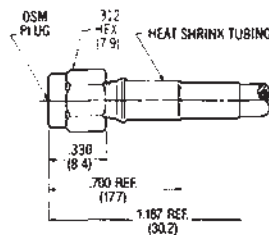
OSM (SMA) For Flexible Cable

Connector housing to cable braid is crimp attached for rapid production assembly. A special crimping tool is required. Center contact is solder attached.

Flexible Cable • Crimp Attachment

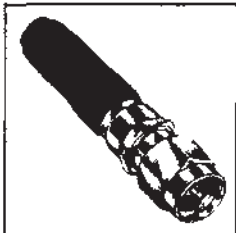


Straight Cable Plug
Non-Captured Contact

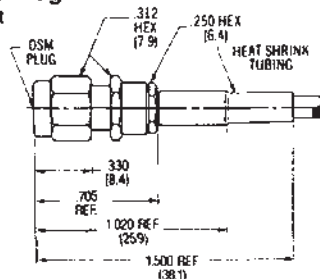


Part Number	Cable
2031-5005-02	RG 55/U 142, 223, 400
2031-5055-02	RG 58/U 141, 303
2031-5006-02	RG 174/U 188, 316

Finish: Passivated stainless steel. For gold plate, change the Part Number suffix from -02 to -00. Refer to Appendix for Coaxial Cable Characteristics. Refer to recommended assembly tools in Tool Section.



Straight Cable Plug
Captured Contact

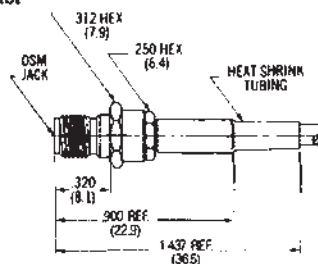


Part Number	Cable
2031-5011-02	RG 55/U 142, 223, 400
2031-5056-02	RG 58/U 141, 303
2031-5012-02	RG 174/U 188, 316
2031-5013-02	RG 180/U 195
2031-5102-02	RG 178/U 196

Finish: Passivated stainless steel. For gold plate, change the Part Number suffix from -02 to -00. Refer to Appendix for Coaxial Cable Characteristics. Refer to recommended assembly tools in Tool Section.



Straight Cable Jack
Captured Contact



Part Number	Cable
2032-5007-02	RG 55/U 142, 223, 400
2032-5021-02	RG 58/U 141, 303
2032-5003-02	RG 174/U 188, 316
2032-5010-02	RG 180/U 195
2032-5026-02	RG 178/U 196

Finish: Passivated stainless steel. For gold plate, change the Part Number suffix from -02 to -00. Refer to Appendix for Coaxial Cable Characteristics. Refer to recommended assembly tools in Tool Section.