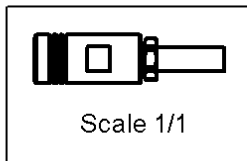
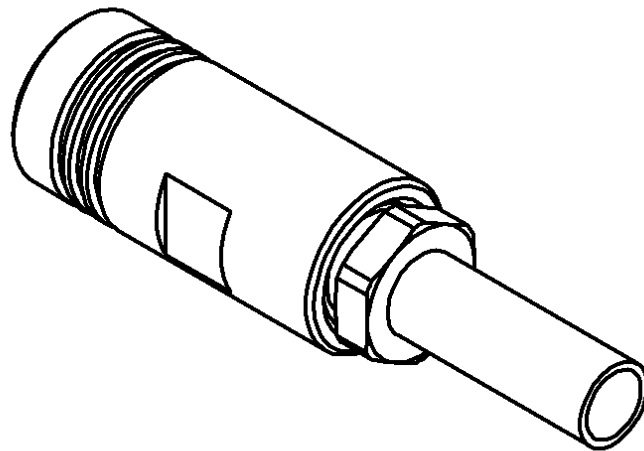
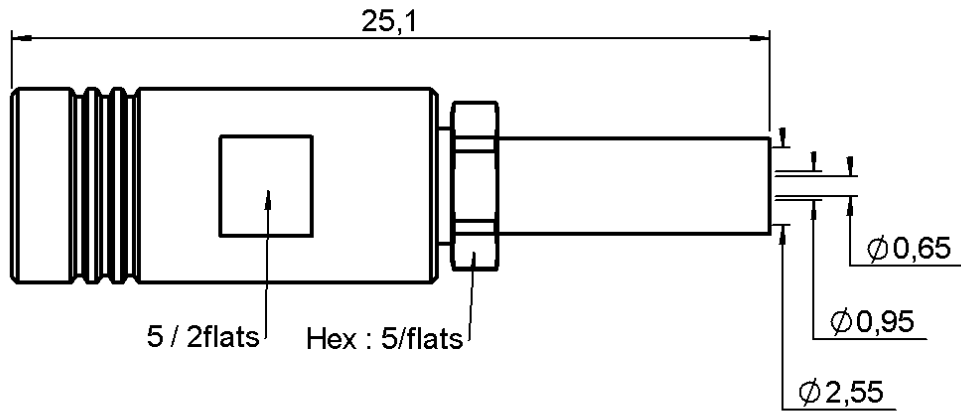


STRAIGHT PLUG CRIMP TYPE

CABLE 2/50 S

Series : **SMB**



All dimensions are in mm.



COMPONENTS	MATERIALS	PLATINGS (µm)
BODY	BRASS	GOLD 0.2 OVER NICKEL 2
CENTER CONTACT	BERYLLIUM COPPER	GOLD 1.3 OVER NICKEL 2
OUTER CONTACT	BERYLLIUM COPPER	GOLD 0.5 OVER NICKEL 2
INSULATOR	PTFE	
GASKET	-	
OTHERS PARTS	BRASS	GOLD 0.2 OVER NICKEL 2
-	-	-
-	-	-

TECHNICAL DATA SHEET		2 / 2															
STRAIGHT PLUG CRIMP TYPE																	
CABLE 2/50 S		Series : SMB															
<u>PACKAGING</u>		<u>SPECIFICATION</u>															
Standard	Unit	Other															
100	'W' option	Contact us															
<u>ELECTRICAL CHARACTERISTICS</u>		<u>CABLE ASSEMBLY</u>															
Impedance	50 Ω																
Frequency	0-4 GHz																
VSWR	1.30 + 0.040 x F(GHz) Maxi																
Insertion loss	0.25 √F(GHz) dB Maxi																
RF leakage	- (57 - F(GHz)) dB Maxi																
Voltage rating	250 Veff Maxi																
Dielectric withstanding voltage	750 Veff mini																
Insulation resistance	1000 MΩ mini																
		<table border="1" style="width:100%; border-collapse: collapse;"> <thead> <tr> <th style="text-align: left;">Stripping</th> <th>a</th> <th>b</th> <th>c</th> <th>d</th> <th>e</th> <th>f</th> </tr> </thead> <tbody> <tr> <td style="text-align: center;">mm</td> <td style="text-align: center;">2.20</td> <td style="text-align: center;">5.40</td> <td style="text-align: center;">15.5</td> <td style="text-align: center;">0.00</td> <td style="text-align: center;">13.3</td> <td style="text-align: center;">0.00</td> </tr> </tbody> </table>	Stripping	a	b	c	d	e	f	mm	2.20	5.40	15.5	0.00	13.3	0.00	
Stripping	a	b	c	d	e	f											
mm	2.20	5.40	15.5	0.00	13.3	0.00											
		Assembly instruction : Crimp 10 Recommended cable(s) RG 178 KX 21 RG 196 RG 178 LC															
<u>MECHANICAL CHARACTERISTICS</u>		Cable retention - pull off 58 N mini - torque 3.9 N.cm															
Center contact retention																	
Axial force – Mating end	10 N mini																
Axial force – Opposite end	10 N mini																
Torque	NA N.cm mini																
Recommended torque																	
Mating	NA N.cm																
Panel nut	NA N.cm																
Clamp nut	90 N.cm																
A/F clamp nut	5.000 mm																
Mating life	500 Cycles mini																
Weight	3.300 g																
<u>ENVIRONMENTAL</u>		<u>TOOLING</u>															
Operating temperature	-65/+165 °C																
Hermetic seal	NA Atm.cm3/s																
Panel leakage	NA																
		<table border="1" style="width:100%; border-collapse: collapse;"> <thead> <tr> <th>Part Number</th> <th>Description</th> <th>Hexagon</th> </tr> </thead> <tbody> <tr> <td></td> <td></td> <td></td> </tr> <tr> <td>R282.211.000</td> <td>CRIMPING TOOL</td> <td>2.67</td> </tr> <tr> <td>R282.235.003</td> <td>CRIMPING DIES</td> <td>2.67</td> </tr> <tr> <td>R282.293.000</td> <td>CRIMPING TOOL</td> <td>-</td> </tr> </tbody> </table>	Part Number	Description	Hexagon				R282.211.000	CRIMPING TOOL	2.67	R282.235.003	CRIMPING DIES	2.67	R282.293.000	CRIMPING TOOL	-
Part Number	Description	Hexagon															
R282.211.000	CRIMPING TOOL	2.67															
R282.235.003	CRIMPING DIES	2.67															
R282.293.000	CRIMPING TOOL	-															
		<u>OTHERS CHARACTERISTICS</u>															
		-															