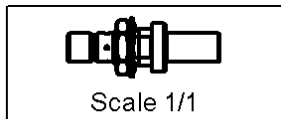
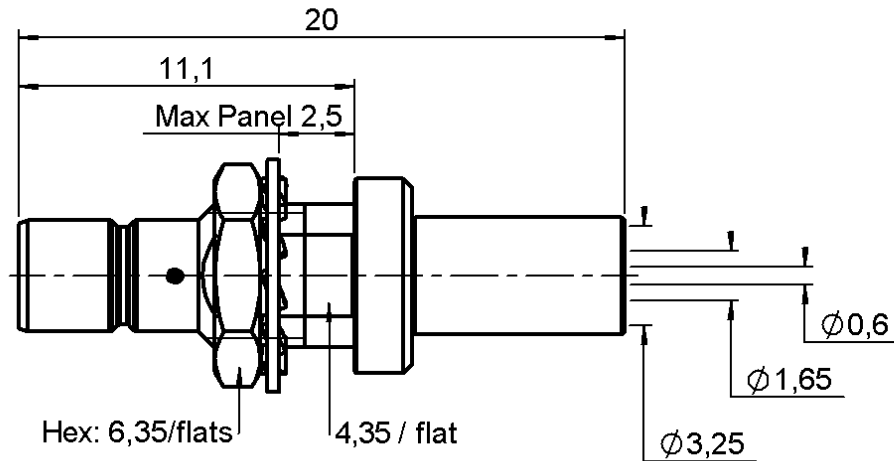


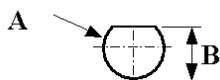
STRAIGHT BULKHEAD JACK CRIMP TYPE

REAR MOUNT - CABLE K02252D

Series : **SMB**

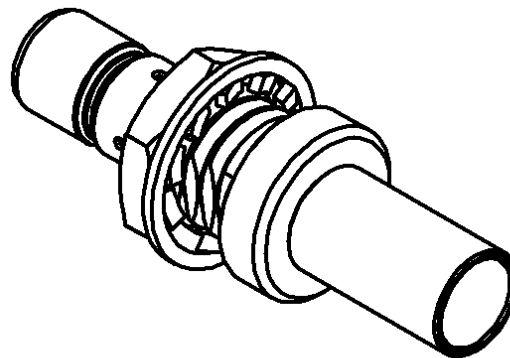


PANEL CUT OUT



| mm | | |
|----|------|------|
| | Maxi | mini |
| A | 5 | 4.9 |
| B | 4.55 | 4.45 |

All dimensions are in mm.



| COMPONENTS | MATERIALS | PLATINGS (µm) |
|----------------|-----------|------------------------|
| BODY | BRASS | GOLD 0.2 OVER NICKEL 2 |
| CENTER CONTACT | BRASS | GOLD 1.3 OVER NICKEL 2 |
| OUTER CONTACT | - | - |
| INSULATOR | PTFE | - |
| GASKET | - | - |
| OTHERS PARTS | BRASS | GOLD 0.5 OVER NICKEL 2 |
| - | - | - |
| - | - | - |

TECHNICAL DATA SHEET

STRAIGHT BULKHEAD JACK CRIMP TYPE

REAR MOUNT - CABLE K02252D

Series : **SMB**

PACKAGING

| Standard | Unit | Other |
|----------|------|-------------------|
| 1 | - | Contact us |

SPECIFICATION

CABLE ASSEMBLY

| Stripping mm | a | b | c | d | e | f |
|-----------------|------|------|------|------|------|------|
| | 2.50 | 4.50 | 10.0 | 0.00 | 7.50 | 0.00 |

ELECTRICAL CHARACTERISTICS

| | | |
|---------------------------------|---------------|-----------------------------|
| Impedance | | 50 Ω |
| Frequency | | 0-4 GHz |
| VSWR | 1.25 + | 0.040 x F(GHz) Maxi |
| Insertion loss | | 0.25 √F(GHz) dB Maxi |
| RF leakage | - (| 57 - F(GHz)) dB Maxi |
| Voltage rating | | 335 Veff Maxi |
| Dielectric withstanding voltage | | 1000 Veff mini |
| Insulation resistance | | 1000 MΩ mini |

Assembly instruction : **Crimp 01**

Recommended cable(s)
RD 316
K02252D

Cable retention
- pull off **240** N mini
- torque **NA** N.cm

MECHANICAL CHARACTERISTICS

| | | |
|----------------------------|--------------|-----------|
| Center contact retention | | |
| Axial force – Mating end | 10 | N mini |
| Axial force – Opposite end | 10 | N mini |
| Torque | NA | N.cm mini |
| Recommended torque | | |
| Mating | NA | N.cm |
| Panel nut | 60 | N.cm |
| Clamp nut | NA | N.cm |
| A/F clamp nut | 0.000 | mm |

| | | |
|-------------|--------------|-------------|
| Mating life | 500 | Cycles mini |
| Weight | 1.760 | g |

TOOLING

| Part Number | Description | Hexagon |
|--------------|-----------------------------|--------------|
| . | . | . |
| R282.281.000 | CRIMPING TOOL | 2x4 (pos. 3) |
| R282.293.000 | CRIMPING TOOL | - |
| R282.983.000 | POSITONER FOR CRIMPING TOOL | - |
| R282.211.000 | CRIMPING TOOL | 3.25 |
| R282.235.003 | CRIMPING DIES | 3.25 |

OTHERS CHARACTERISTICS

-

ENVIRONMENTAL

| | | |
|-----------------------|-----------------|-----------|
| Operating temperature | -65/+165 | ° C |
| Hermetic seal | NA | Atm.cm3/s |
| Panel leakage | NA | |