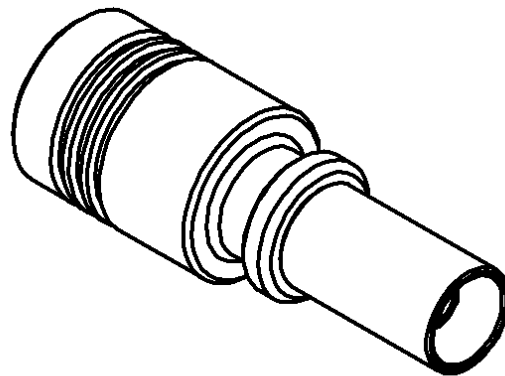
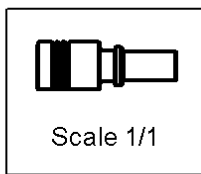
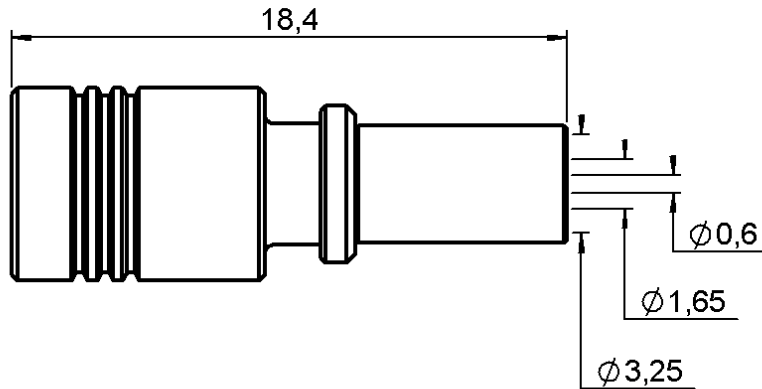


**STRAIGHT PLUG CRIMP TYPE**

**CABLE K02252D**

Series : **SMB**



All dimensions are in mm.



COMPONENTS	MATERIALS	PLATINGS (µm)
<b>BODY</b>	<b>BRASS</b>	<b>GOLD 0.2 OVER NICKEL 2</b>
<b>CENTER CONTACT</b>	<b>BERYLLIUM COPPER</b>	<b>GOLD 1.3 OVER NICKEL 2</b>
<b>OUTER CONTACT</b>	<b>BERYLLIUM COPPER</b>	<b>GOLD 0.5 OVER NICKEL 2</b>
<b>INSULATOR</b>	<b>PTFE</b>	
<b>GASKET</b>	<b>-</b>	
<b>OTHERS PARTS</b>	<b>BRASS</b>	<b>GOLD 0.5 OVER NICKEL 2</b>
<b>-</b>	<b>-</b>	<b>-</b>
<b>-</b>	<b>-</b>	<b>-</b>

TECHNICAL DATA SHEET		2 / 2														
<b>STRAIGHT PLUG CRIMP TYPE</b>																
<b>CABLE K02252D</b>		Series : <b>SMB</b>														
<b><u>PACKAGING</u></b>		<b><u>SPECIFICATION</u></b>														
Standard	Unit	Other														
<b>100</b>	<b>'W' option</b>	<b>Contact us</b>														
<b><u>ELECTRICAL CHARACTERISTICS</u></b>		<b><u>CABLE ASSEMBLY</u></b>														
Impedance	<b>50</b> Ω															
Frequency	<b>0-4</b> GHz															
VSWR	<b>1.25 + 0.040</b> x F(GHz) Maxi															
Insertion loss	<b>0.25</b> √F(GHz) dB Maxi															
RF leakage	<b>- ( 57</b> - F(GHz)) dB Maxi															
Voltage rating	<b>500</b> Veff Maxi															
Dielectric withstanding voltage	<b>1000</b> Veff mini															
Insulation resistance	<b>1000</b> MΩ mini															
		<table border="1" style="width:100%; border-collapse: collapse;"> <thead> <tr> <th style="text-align: left;">Stripping</th> <th>a</th> <th>b</th> <th>c</th> <th>d</th> <th>e</th> <th>f</th> </tr> </thead> <tbody> <tr> <td style="text-align: center;">mm</td> <td style="text-align: center;">2.50</td> <td style="text-align: center;">5.40</td> <td style="text-align: center;">11.0</td> <td style="text-align: center;">0.00</td> <td style="text-align: center;">8.50</td> <td style="text-align: center;">0.00</td> </tr> </tbody> </table>	Stripping	a	b	c	d	e	f	mm	2.50	5.40	11.0	0.00	8.50	0.00
Stripping	a	b	c	d	e	f										
mm	2.50	5.40	11.0	0.00	8.50	0.00										
		Assembly instruction : <span style="float: right;"><b>Crimp 01</b></span>  Recommended cable(s) RD 316 K02252D SHF 316 D  Cable retention - pull off <span style="float: right;"><b>240</b> N mini</span> - torque <span style="float: right;"><b>3.9</b> N.cm</span>														
<b><u>MECHANICAL CHARACTERISTICS</u></b>		<b><u>TOOLING</u></b>														
Center contact retention																
Axial force – Mating end	<b>10</b> N mini															
Axial force – Opposite end	<b>10</b> N mini															
Torque	<b>NA</b> N.cm mini															
Recommended torque																
Mating	<b>NA</b> N.cm															
Panel nut	<b>NA</b> N.cm															
Clamp nut	<b>NA</b> N.cm															
A/F clamp nut	<b>0.000</b> mm															
Mating life	<b>500</b> Cycles mini															
Weight	<b>2.000</b> g															
<b><u>ENVIRONMENTAL</u></b>		<b><u>OTHERS CHARACTERISTICS</u></b>														
Operating temperature	<b>-65/+165</b> ° C															
Hermetic seal	<b>NA</b> Atm.cm3/s															
Panel leakage	<b>NA</b>															