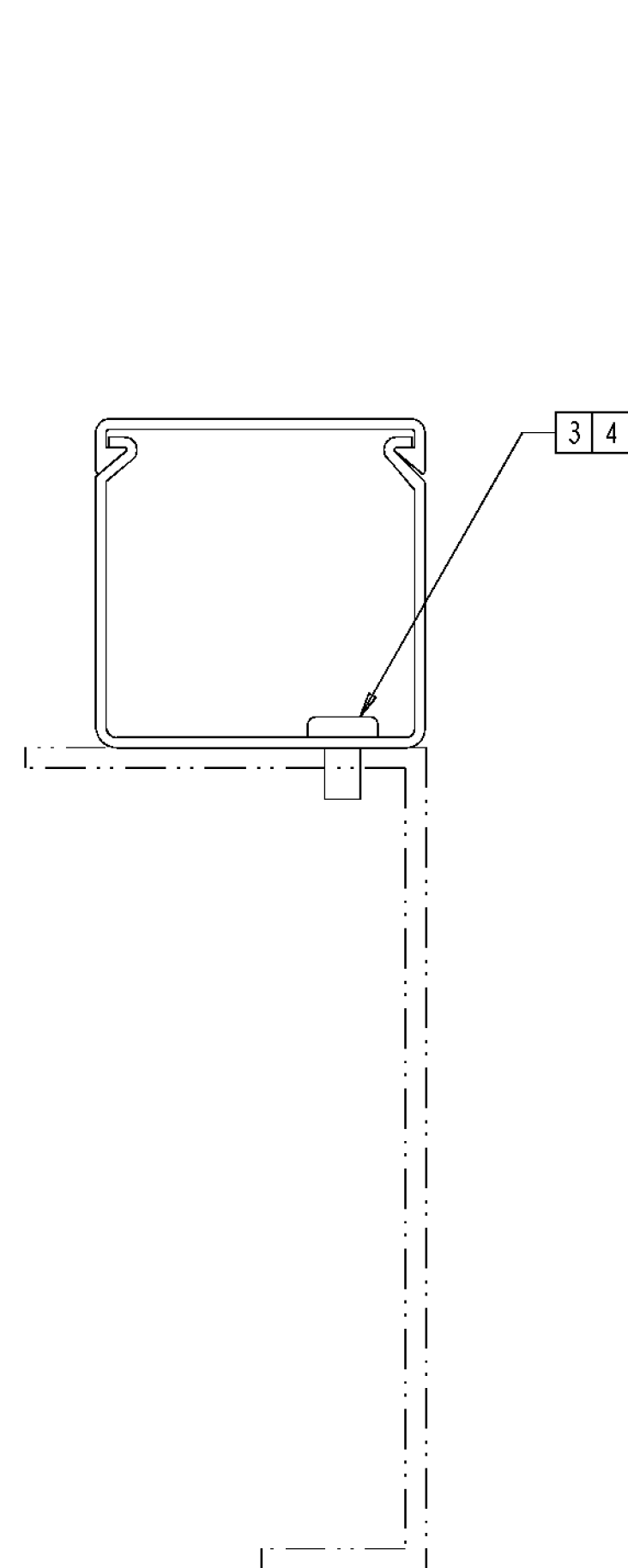
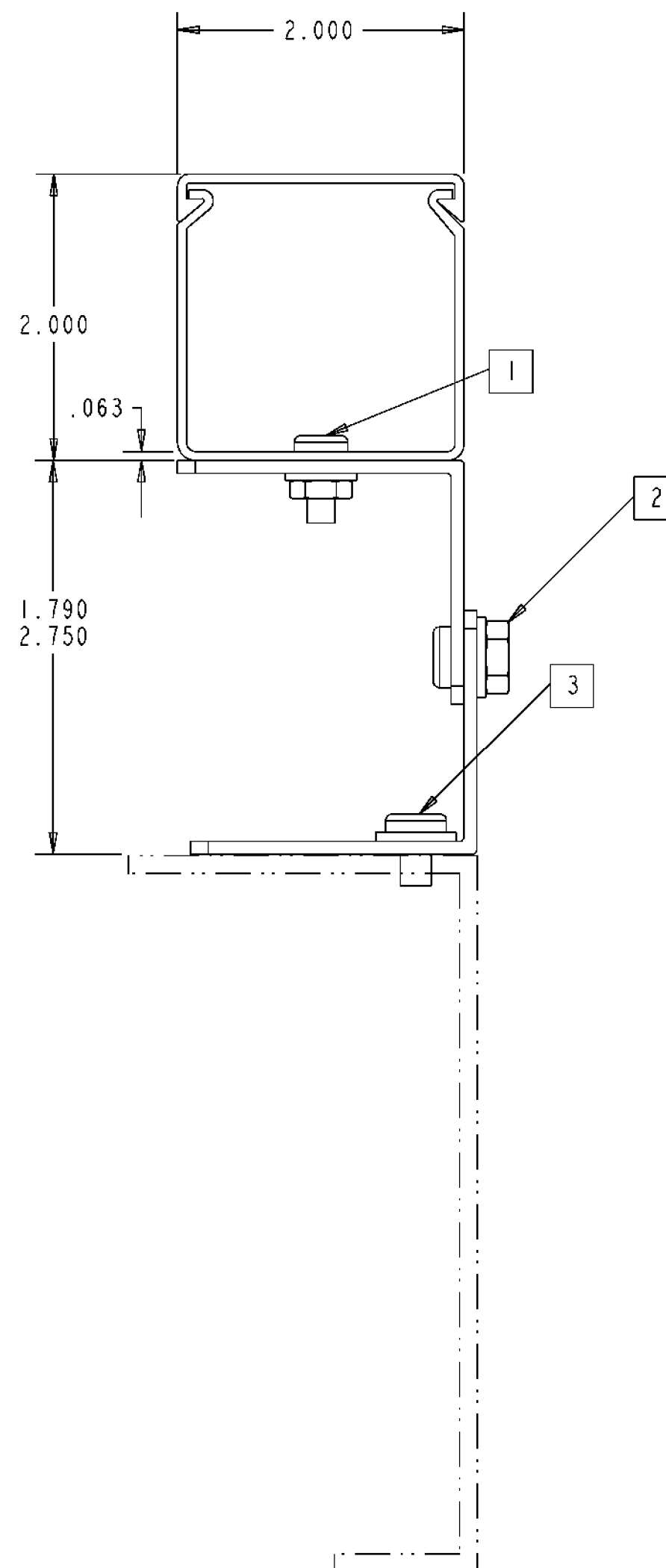


REV	MCO	DWN	DATE
C	20062027	CDZ	22-JUN-00
D	20239869	OCM	14-MAY-08

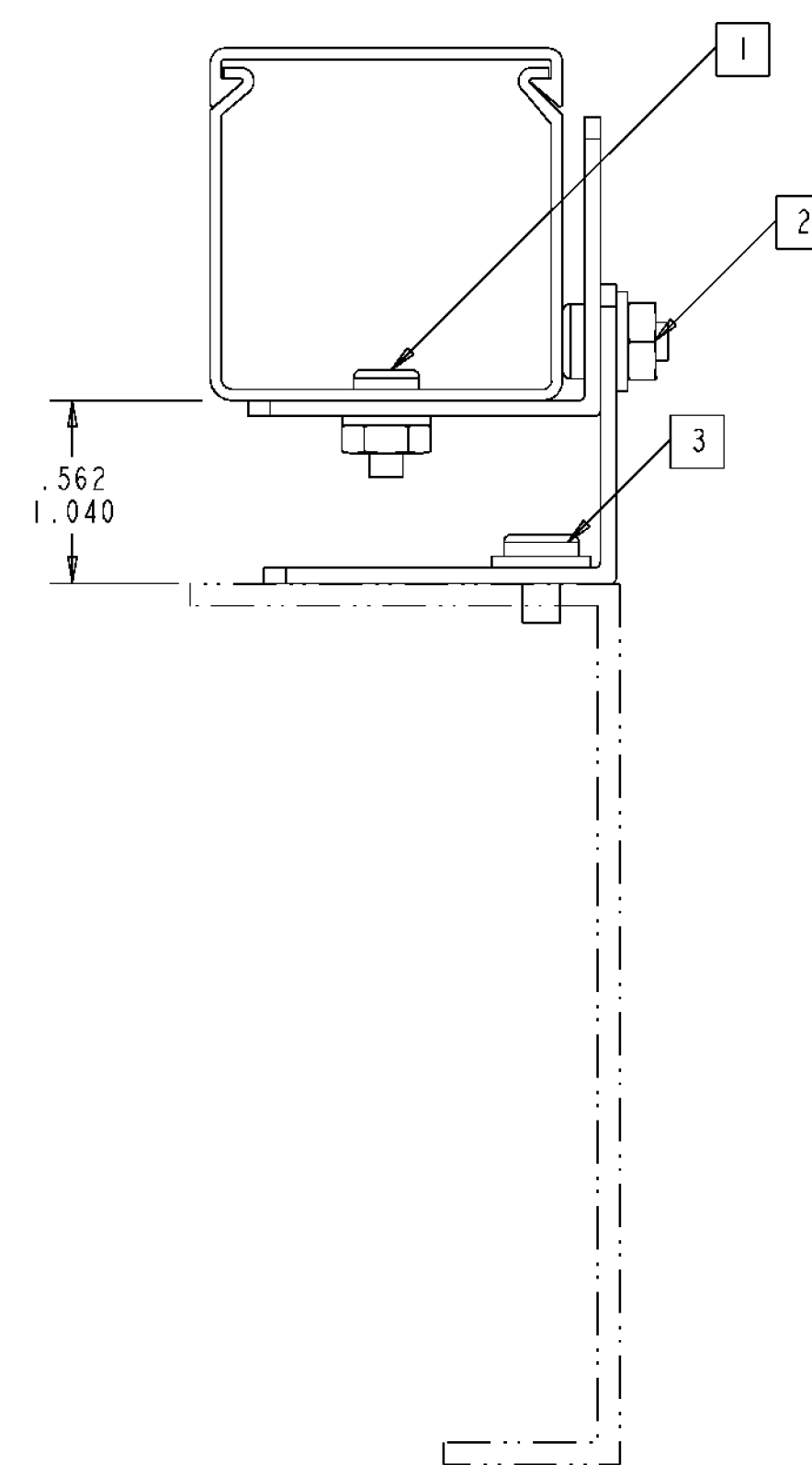
KEY
 ——— COMPONENTS INCLUDED IN KIT
 - - - COMPONENTS NOT INCLUDED IN KIT



BRACKET ARRANGEMENT "C"



BRACKET ARRANGEMENT "A"



BRACKET ARRANGEMENT "B"

FGSB-KTW4-C	BLACK
FGSP-KTW4-C	PUTTY
FGSO-KTW4-C	ORANGE
FGS-KTW4-C	YELLOW
CATALOG NO.	COLOR

QTY	PART DESCRIPTION
1	2" X 2" VERTICAL DUCT SOLID
1	DUCT COVER
10	DUCT MOUNTING BRACKETS
10	#12 X 1/2 SCREWS
10	#12 FLATWASHERS
5	#12 HEX NUTS
5	#10 X 3/8 SCREWS
5	#10 FLATWASHERS
5	#10 HEX NUTS
1	HOSE END CLAMP
2	#6 X 3/8 PAN HEAD SCREWS
2	#6 STAR-LOCK-WASHERS
2	#6 HEX NUTS

NOTES:

- 1 #10 SCREW, NUT, AND WASHER.
- 2 #12 SCREW, NUT, AND WASHER.
- 3 #12 SCREW AND WASHER.
- 4 DRILL MOUNTING SLOTS ON 2 X 2 VERTICAL DUCT TO .25 DIA.



INFORMATION ON THIS DOCUMENT IS PROPRIETARY TO ADC AND SHALL NOT BE USED, COPIED, REPRODUCED, OR DISCLOSED IN WHOLE OR IN PART WITHOUT WRITTEN CONSENT OF ADC.

ALL DIMS AND TOLERANCES ARE INCHES UNLESS OTHERWISE SPECIFIED

TITLE FIBERGUIDE KIT, 2X2 VERT SOLID DUCT (INSTALLATION DRAWING)

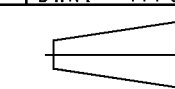
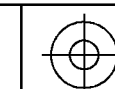
DRAWING NUMBER 4-29000-4185

DO NOT SCALE DRAWING

ENGR: BRUCE MUSOLF

DWN: MICHAEL VILLAS

SHT. 1 OF 1



DIMENSIONS IN INCHES
THIRD ANGLE PROJECTION