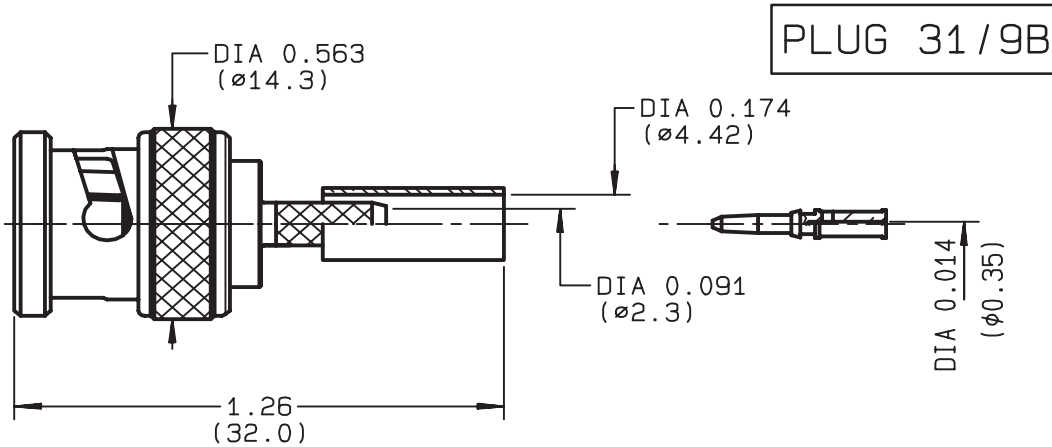


TECHNICAL DATA

STRAIGHT PLUG CRIMP TYPE CABLE 3.6/75 D	R142.081.120 SERIES BNC 75
--	---



NOMINAL IMPEDANCE	75 Ω
FREQUENCY RANGE	0-1.5 GHz
TEMPERATURE RATING	-65/+165 °C
V.S.W.R	1.30 + 0 x F(GHz)Maxi
RF INSERTION LOSS	0.115 √F(GHz) dB Maxi
VOLTAGE RATING	500 Veff Maxi
DIELECTRIC WITHSTANDING VOLTAGE	1500 Veff Mini
INSULATION RESISTANCE	5000 MΩMini
HERMETIC SEAL	NA Atm.cm ³ /s
LEAKAGE (pressurized only)	NA
MECHANICAL DURABILITY	500 Cycles
WEIGHT	gr
SPECIFICATION	

CABLES : **BT3002**
POPE 46431

OTHERS CHARACTERISTICS

TRL P/N :	937217Z
CABLE RETENTION	150 N Mini
CENTER CONTACT RETENTION	
Axial force - mating end	27 N Mini
Axial force - opposite end	27 N Mini
Torque	NA cm.N Mini
RECOMMENDED TORQUES	
Mating	NA cm.N
Panel nut	NA cm.N
Clamp nut	NA cm.N

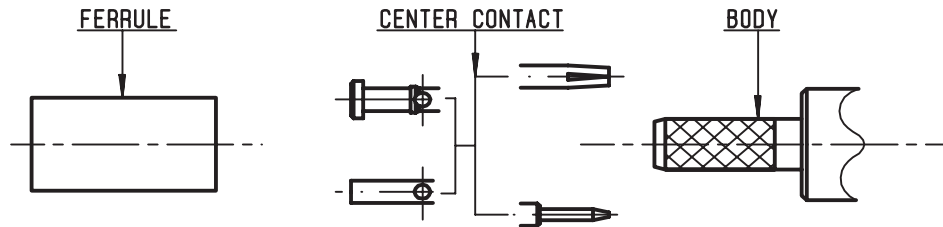
CONNECTOR PARTS:	MATERIALS	FINISH	(all values are given in micrometers)
BODY	BRASS	NICKEL 2	
OUTER CONTACT	BRASS	NICKEL 2	
CENTER CONTACT	BRASS	GOLD 1.5 OVER NICKEL 2	
INSULATOR	POLYPROPYLENE	-	
GASKET		-	
OTHERS PIECES	BRASS	NICKEL 2	

ISSUE 9925D00	CREATION DATE 20/06/1995	FILE PART-NUMBER 94-0108-511		RADIALL ®
-------------------------	------------------------------------	--	---	------------------

TECHNICAL DATA

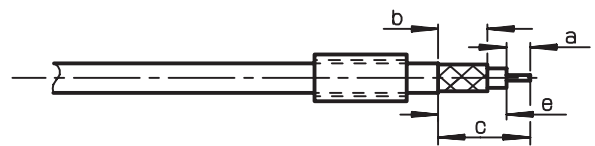
R142.081.120

ISSUE **9925D00** SERIES **BNC 75**



①

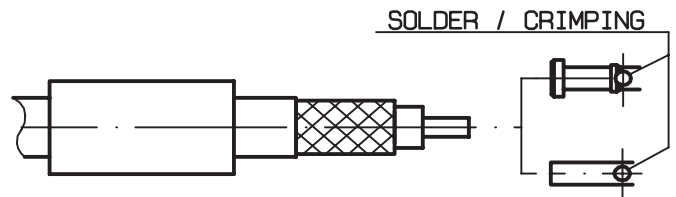
Slide ferrule onto cable
Strip the cable .
-
-



Stripping	a	b	c	d	e
inch	0.157	0.335	0.591	0	0.433
mm	4	8.5	15		11

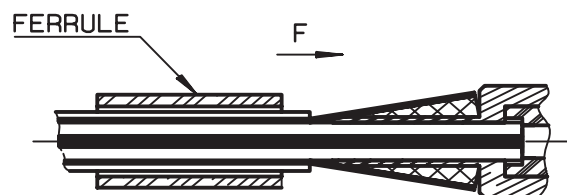
②

Slide center contact on until it bottoms against cable dielectric .
Solder or crimp center contact .
Crimping tool : R282 287 000 (Hex. :1.46)
(TRL P/N : 92316)
+ dies R282 265 002 (Hex.: 1.46) .
(TRL P/N : 92435)



③

Fan the braid .
Slide cable into the body until bottoms against insulator .
Slide ferrule over the braid .
(In direction F)



④

Crimp the ferrule with crimping tool
R 282 287 000
(TRL P/N : 92316)
+ dies R282 265 002 (Hex.: 4.52) .
(TRL P/N : 92435)
-
-
-
-

