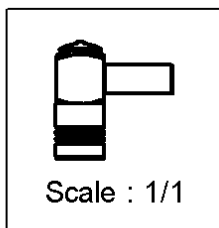
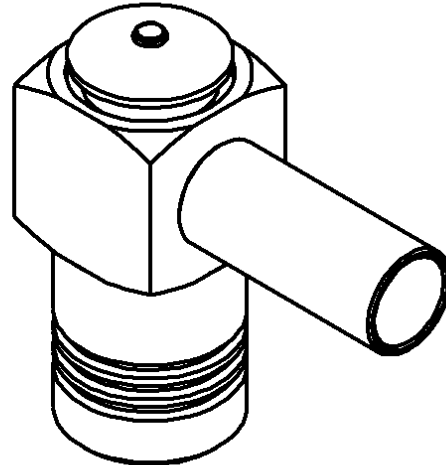
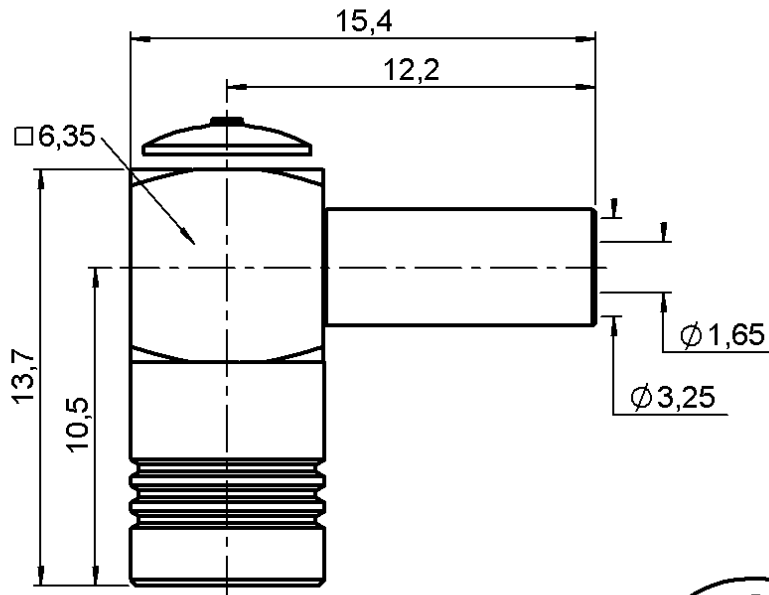


RIGHT ANGLE PLUG CRIMP TYPE

CABLE K02252D

Series : **SMB**



All dimensions are in mm.



COMPONENTS	MATERIALS	PLATINGS (µm)
BODY	BRASS	GOLD 0.2 OVER NICKEL 2
CENTER CONTACT	BERYLLIUM COPPER	GOLD 1.3 OVER NICKEL 2
OUTER CONTACT	BERYLLIUM COPPER	GOLD 0.5 OVER NICKEL 2
INSULATOR	PTFE	
GASKET	-	
OTHERS PARTS	BRASS	GOLD 0.2 OVER NICKEL 2
-	-	-
-	-	-

TECHNICAL DATA SHEET		2 / 2														
RIGHT ANGLE PLUG CRIMP TYPE																
CABLE K02252D		Series : SMB														
<u>PACKAGING</u>		<u>SPECIFICATION</u>														
Standard	Unit	Other														
100	'W' option	Contact us														
<u>ELECTRICAL CHARACTERISTICS</u>		<u>CABLE ASSEMBLY</u>														
Impedance	50 Ω															
Frequency	0-4 GHz															
VSWR	1.35 + 0.040 x F(GHz) Maxi															
Insertion loss	0.5 √F(GHz) dB Maxi															
RF leakage	- (57 - F(GHz)) dB Maxi															
Voltage rating	335 Veff Maxi															
Dielectric withstanding voltage	1000 Veff mini															
Insulation resistance	1000 MΩ mini															
		<table border="1" style="width:100%; border-collapse: collapse;"> <thead> <tr> <th style="text-align: left;">Stripping</th> <th>a</th> <th>b</th> <th>c</th> <th>d</th> <th>e</th> <th>f</th> </tr> </thead> <tbody> <tr> <td style="text-align: center;">mm</td> <td style="text-align: center;">1.50</td> <td style="text-align: center;">5.40</td> <td style="text-align: center;">9.60</td> <td style="text-align: center;">0.00</td> <td style="text-align: center;">8.10</td> <td style="text-align: center;">0.00</td> </tr> </tbody> </table>	Stripping	a	b	c	d	e	f	mm	1.50	5.40	9.60	0.00	8.10	0.00
Stripping	a	b	c	d	e	f										
mm	1.50	5.40	9.60	0.00	8.10	0.00										
		Assembly instruction : Crimp 05 Recommended cable(s) RD 316 K02252D SHF 316 D Cable retention - pull off 240 N mini - torque NA N.cm														
<u>MECHANICAL CHARACTERISTICS</u>		<u>TOOLING</u>														
Center contact retention																
Axial force – Mating end	10 N mini															
Axial force – Opposite end	10 N mini															
Torque	NA N.cm mini															
Recommended torque																
Mating	NA N.cm															
Panel nut	NA N.cm															
Clamp nut	NA N.cm															
A/F clamp nut	3.000 mm															
Mating life	500 Cycles mini															
Weight	3.045 g															
<u>ENVIRONMENTAL</u>		<u>OTHERS CHARACTERISTICS</u>														
Operating temperature	-65/+165 °C															
Hermetic seal	NA Atm.cm3/s															
Panel leakage	NA															